



QINGDAO XIANGCHENGDE MACHINERY
青岛祥成德机械

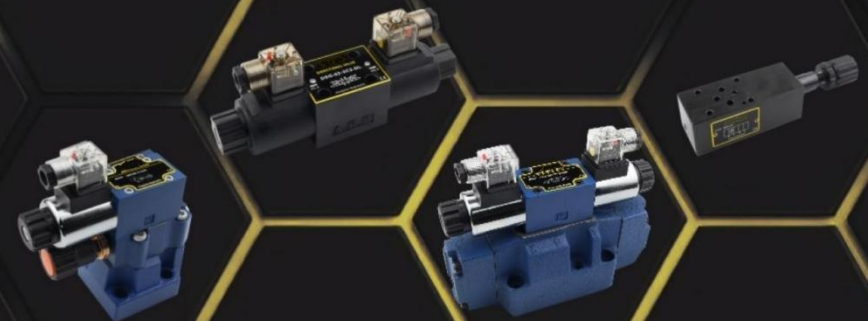
Qingdao Xiangchengde machinery Co.,ltd

Address : Chengyang ,Qingdao , China

Tell : +86 130 4503 5930

Web : www.xcdmachinery.com

E mail : kendyxcd@gmail.com



Product

Product

DIRECTIONAL CONTROL VALVES/方向控制阀

SOLENOID DIRECTIONAL VALVES/电磁换向阀

- 02 DSG 油研型电磁换向阀
- 03 4WE 力士乐型电磁换向阀

ELECTRO-HYDRAULIC OPERATED DIRECTIONAL VALVES/电液换向阀

- 04 DSHG 油研型电液换向阀
- 05 4WEH 力士乐型电液换向阀

MANUAL CONTROL DIRECTIONAL VALVES/手动换向阀

- 06 DMG Manual Directional Valves/油研型手动换向阀
- 07 4WMM Manual Directional Valves/力士乐型手动换向阀
- 08 4WMME Solenoid Valves With Emergency Handle手电一体电磁阀

SOLENOID BALL VALVES/电磁球阀

- 09 QDF 电磁球阀

PRESSURE CONTROL VALVES/压力控制阀

PRESSURE RELIEF VALVES/压力溢流阀

- 10 SBG/SBSG Low Noise Relief Valves/低噪音（电磁）溢流阀
- 11 BG/BSG BT/BST Pilot Operated Relief Valves/先导式（电磁）溢流阀
- 12 DB/DBW Pilot Operated Relief Valves/先导式（电磁）溢流阀
- 13 DA/DAW Pilot Operated Unloading Relief Valves/先导式（电磁）卸荷溢流阀
- 14 DT/DG Direct Type Relief Valves/直动式溢流阀
- 15 DBD Direct Type Relief Valves/直动式溢流阀
- 16 MRV Modular Relief Valves/叠加式溢流阀
- 17 ZDB Modular Relief Valves/叠加式溢流阀

PRESSURE REDUCING VALVES/压力减压阀

- 18 MBRV Modular Reducing Valves/叠加式减压阀
- 19 ZDR Modular Reducing Valves/叠加式减压阀
- 20 RCG Pressure Reducing and Check Valves/减压单向阀
- 21 DR Pilot Operated Reducing Valves/先导式减压阀

PRESSURE SEQUENCE VALVES/压力顺序阀

- 22 H/HC Type Pressure Control Valves/HC型压力控制阀
- 23 DZ Pilot Operated Sequence Valves/先导式顺序阀

CHECK VALVES/单向阀

- 24 MPCV Modular Operated Check Valves/叠加式液控单向阀
- 25 Z2S Modular Operated Check Valves/叠加式液控单向阀
- 26 CRG Right Angle Check Valves/直角单向阀
- 27 CRNG Right Angle Check Valves/直角单向阀
- 28 MCV Modular Check Valves/叠加式单向阀
- 29 CIT In-line Check valves/直通单向阀
- 30 S Type Check Valves/S型单向阀
- 31 SV/SL Operated Check Valves/液控单向阀

FLOW CONTROL VALVES/流量控制阀

- 32 MTCV Modular Throttle and Check Valves/叠加式单向节流阀
- 33 Z2FS Modular Throttle and Check Valves/叠加式单向节流阀
- 34 KC In-line Flow Valves/单向节流阀
- 35 MK Restrictive Check Valves/单向节流阀

DIRECTIONAL CONTROL VALVES 方向控制阀
SOLENOID DIRECTIONAL VALVES
油研型电磁换向阀

方向控制阀 DIRECTIONAL CONTROL VALVES
SOLENOID DIRECTIONAL VALVES
力士乐型电磁换向阀



Technical Data / 技术参数

Items / 规格	DSG-02	DSG-03
Max Pressure / 最高工作油压	25Mpa	25Mpa
Max Flow / 最大流量	80L/min	120L/min
Working Voltage Range / 电压允许波动	±10%	±10%
Net Weight / 净重	2kg	4.7kg

To Order / 选型说明

DSG 02 3C2 D24 DL

- 1 Solenoid Directional Valve (电磁换向阀)
- 2 Size:02/03
- 3 Spool Symbol (阀芯机能)
- 4 D12 :12VDC (直流12V) | D24:24VDC (直流24V) | A110:110VAC (交流110V) | A220:220VAC (交流220V)
R110:110VRAC Rectified (本整流交流110V) | R220:220VRAC Rectified (本整流交流220V)
- 5 DL: DIN43650 Connector (插头式) | LW: Terminal Box Type (接线盒式)

Technical Data / 技术参数

Items / 规格	4WE6	4WE10
Max Pressure / 最高工作油压	31.5Mpa	31.5Mpa
Max Flow / 最大流量	80L/min	120L/min
Working Voltage Range / 电压允许波动	±10%	±10%
Net Weight / 净重	2kg	5.7kg

To Order / 选型说明

4WE 6 E 60 ■ G24 Z5L

- 1 Solenoid Directional Valve (电磁换向阀)
- 2 6:NG6 (6通径) | 10:NG10 (10通径)
- 3 Spool Symbol (阀芯机能)
- 4 50:50 Series | 60:60 Series
- 5 None: Spring Return 弹簧复位 | O: Without Spring Return 无弹簧复位
OF: Without Spring Return With Detent 无弹簧复位, 带定位器
- 6 G12:12VDC (直流12V) | G24:24VDC (直流24V)
W110:110VRAC Rectified (本整流交流110V) | W220:220VRAC Rectified (本整流交流220V)
- 7 Z5L: DIN43650 Connector (插头式) | ZC: Deutsch Connector (防水插头)

DIRECTIONAL CONTROL VALVES 方向控制阀
ELECTRO-HYDRAULIC OPERATED DIRECTIONAL VALVES
油研型电液换向阀电

方向控制阀 DIRECTIONAL CONTROL VALVES
ELECTRO-HYDRAULIC OPERATED DIRECTIONAL VALVES
力士乐型电液换向阀



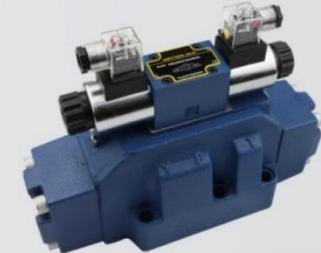
DSHG-04



DSHG-06



4WEH16



4WEH25

Technical Data / 技术参数

Items / 规格	DSHG-04	DSHG-06	DSHG-10
Max Pressure / 最高工作油压	31.5Mpa	31.5Mpa	31.5Mpa
Max Flow / 最大流量	300L/min	500L/min	900L/min
Working Voltage Range / 电压允许波动	±10%	±10%	±10%
Net Weight / 净重	8.7kg	15.1kg	41kg

To Order / 选型说明

DSHG 04 3C2 ■ T D24

1 2 3 4 5 6

- 1 Electro-hydraulic Operated Directional Valves
- 2 Size:04/06/10
- 3 Spool Symbol (阀芯机能)
- 4 Pilot Connection (控油形式) | None:Internal Pilot(空白:内控) | E:External Pilot(外控)
- 5 Drain Connection (泄油形式) | None:External Drain(空白:外泄) | T:Internal Drain(内泄)
- 6 D24:24VDC | A220:220VAC

Technical Data / 技术参数

Items / 规格	4WEH16	4WEH25	4WEH32
Max Pressure / 最高工作油压	35Mpa	35Mpa	35Mpa
Max Flow / 最大流量	300L/min	650L/min	1100L/min
Working Voltage Range / 电压允许波动	±10%	±10%	±10%
Net Weight / 净重	10.1kg	18.4kg	50kg

To Order / 选型说明

4WEH 16 E ■ ET G24

1 2 3 4 5 6

- 1 Electro-hydraulic Operated Directional Valves (电液换向阀)
- 2 16: NG16 (16通径) | 25:NG25 (25通径) | 32:NG32 (32通径)
- 3 Spool Symbol (阀芯机能)
- 4 None:60 Series
- 5 None:Extl Cntr Extl Dish(空白:外供外排) | E:Intl Cntr Extl Dish(内供外排)
ET:Intl Cntr Intl Dish(内供内排) | T:Extl Cntr Intl Dish(外供内排)
- 6 G12:DC12V(直流12V) | G24:DC24V(直流24V)
W110:RAC110V Rectified(本整交流110V) | W220:RAC220V Rectified(本整交流220V)

DIRECTIONAL CONTROL VALVES 方向控制阀
 MANUAL CONTROL DIRECTIONAL VALVES
 油研型手动换向阀

方向控制阀 DIRECTIONAL CONTROL VALVES
 MANUAL CONTROL DIRECTIONAL VALVES
 力士乐型手动换向阀



DMG-02



DMG-03



4WMM6

Technical Data / 技术参数

Items / 规格	DMG-02	DMG-03
Max Pressure / 最高工作油压	31.5Mpa	31.5Mpa
Max Flow / 最大流量	35L/min	100L/min
Net Weight / 净重	1.3kg	2.6kg

To Order / 选型说明

DMG 02 3C2 W

① — ② — ③ — ④

- ① Manual Control Directional Valve (手动换向阀)
- ② Size:02/03
- ③ Spool Symbol (阀芯机能)
- ④ W: Spring Return (弹簧复位) | O: Steel Ball Position (钢珠定位)

Technical Data / 技术参数

Items / 规格	4WMM6	4WMM10	4WMM16	4WMM25
Max Pressure / 最高工作油压	31.5Mpa	31.5Mpa	31.5Mpa	31.5Mpa
Max Flow / 最大流量	60L/min	100L/min	300L/min	450L/min
Net Weight / 净重	1.6kg	4.4kg	8kg	12.2kg

To Order / 选型说明

4WMM 6 E 60 ■

① — ② — ③ — ④ — ⑤

- ① Manual Directional valve (手动换向阀)
- ② 6: NG6 (6通径) | 10: NG10 (10通径) | 16: NG16 (16通径) | 25: NG25 (25通径)
- ③ Spool Symbol (阀芯机能)
- ④ 50: 50 Series | 60: 60 Series
- ⑤ None: Spring Return (弹簧复位) | F: Steel Ball Position (钢珠定位)

DIRECTIONAL CONTROL VALVES 方向控制阀
SOLENOID VALVES WITH EMERGENCY HANDLE
手电一体换向阀

方向控制阀 DIRECTIONAL CONTROL VALVES
SOLENOID BALL VALVES
电磁球阀



4WMME6



4WMME10



23QDF

Technical Data / 技术参数

Items / 规格	4WMME6	4WMME10
Max Pressure / 最高工作油压	31.5Mpa	31.5Mpa
Max Flow / 最大流量	80L/min	120L/min
Working Voltage Range / 电压允许波动	±10%	±10%
Net Weight / 净重	2.7kg	7.2kg

To Order / 选型说明

4WMME 6 E D24 Z5L

1 2 3 4 5

- 1 Solenoid Directional Valve with EMERGENCY HANDLE (手电一体换向阀)
- 2 6: NG6 (6通径) | 10: NG10 (10通径)
- 3 Spool Symbol (阀芯机能)
- 4 D24: 24VDC | A220: 220VAC
- 5 Z5L: DIN43650 Connector (插头式) | ZC: Deutsch Connector (防水插头)

Technical Data / 技术参数

Items / 规格	23QDF6	23QDF10
Max Pressure / 最高工作油压	31.5Mpa	31.5Mpa
Max Flow / 最大流量	16L/min	36L/min
Net Weight / 净重	0.7kg	

To Order / 选型说明

2 3 QDF 6 B ■ D24

1 2 3 4 5 6 7

- 1 Working Position (工作位置): 2: 2-way(2位)
- 2 Working Oil Port (工作油口): 3: 3-port (3通) | 4: 4-port (4通)
- 3 Solenoid Ball Valve (电磁球阀)
- 4 6: NG6 (6通径) | 10: NG10 (10通径)
- 5 B: Normally Closed (常闭) | K: Normally Open (常开)
- 6 InstallationBoardCode (安装板代号): None: DIN24340A8 | 4: ISO4401AB034A
- 7 D24: 24VDC (直流24V) | A220: 220VAC (交流220V)

PRESSURE CONTROL VALVES 压力控制阀
 LOW NOISE RELIEF VALVES
 低噪音(电磁)溢流阀

压力控制阀 PRESSURE CONTROL VALVES
 PILOT OPERATED RELIEF VALVES
 先导式(电磁)溢流阀



SBG-03



SBSG-03



BG-03



BSG-03

Technical Data / 技术参数

Items / 规格	SBG-03	SBG-06	SBG-10	SBSG-03	SBSG-06	SBSG-10
Max Pressure / 最高工作油压	25Mpa	25Mpa	25Mpa	25Mpa	25Mpa	25Mpa
Max Flow / 最大流量	100L/min	200L/min	400L/min	100L/min	200L/min	400L/min
Net Weight / 净重	4.7kg	7kg	11kg	6.3kg	8.6kg	12.6kg

To Order / 选型说明

SBG **03** **H**
 ① ————— ② ————— ③

① Low Noise Relief Valves (低噪音溢流阀)

② Size: 03 / 06 / 10

③ H: 7~25Mpa | C: 3.5~14Mpa | B: 0.1~7Mpa

SBSG **03** **H** **D24**
 ① ————— ② ————— ③ ————— ④

① Low Noise Solenoid Relief Valves (低噪音电磁溢流阀)

② Size: 03 / 06 / 10

③ H: 7~25Mpa | C: 3.5~14Mpa | B: 0.1~7Mpa

④ D24: 24VDC | A220: 220VAC

Technical Data / 技术参数

Items / 规格	BG/BT-03	BG/BT-06	BG/BT-10	BSG/BST-03	BSG/BST-06	BSG/BST-10
Max Pressure / 最高工作油压	25Mpa	25Mpa	25Mpa	25Mpa	25Mpa	25Mpa
Max Flow / 最大流量	100L/min	200L/min	400L/min	100L/min	200L/min	400L/min
Net Weight / 净重	4.7kg	5.6kg	8.7kg	6.4kg	7.3kg	10.3kg

To Order / 选型说明

B **G/T** **03** **H**
 ① ————— ② ————— ③ ————— ④

① Pilot Operated Relief Valve (先导式溢流阀)

② G: Sub-plate Mounting (板式安装) | T: Threaded Connection (管式安装)

③ Size: 03 / 06 / 10

④ H: 7~25Mpa | C: 3.5~14Mpa | B: 0.1~7Mpa

BS **G/T** **03** **H** **D24**
 ① ————— ② ————— ③ ————— ④ ————— ⑤

① Pilot Operated Solenoid Relief Valve (先导式电磁溢流阀)

② G: Sub-plate Mounting (板式安装) | T: Threaded Connection (管式安装)

③ Size: 03 / 06 / 10

④ H: 7~25Mpa | C: 3.5~14Mpa | B: 0.1~7Mpa

⑤ D24: 24VDC | A220: 220VAC

PRESSURE CONTROL VALVES 压力控制阀
 PILOT OPERATED RELIEF VALVES
 先导式(电磁)溢流阀

压力控制阀 PRESSURE CONTROL VALVES
 PILOT OPERATED UNLOADING RELIEF VALVES
 先导式(电磁)卸荷溢流阀



DB10



DBW10



DA10



DAW10

Technical Data / 技术参数

Items / 规格	DB 10	DB 20	DB 30	DBW 10	DBW 20	DBW 30
Max Pressure / 最高工作油压	31.5Mpa	31.5Mpa	31.5Mpa	31.5Mpa	31.5Mpa	31.5Mpa
Max Flow / 最大流量	250L/min	500L/min	650L/min	250L/min	500L/min	650L/min
Net Weight / 净重	3.4kg	4.4kg	5.6kg	4.9kg	5.8kg	7kg

To Order / 选型说明

DB **W** **10** **B** **D24**
 ① ② ③ ④ ⑤

- ① Pilot Operated Relief Valve (先导式溢流阀)
- ② None: Without Pilot Valve (不带导阀) | W: With Pilot Valve (带导阀)
- ③ Size: 10 / 20 / 30
- ④ A: Normally Closed (常闭) | B: Normally Open (常开)
- ⑤ D24: 24VDC (直流24V) | A220: 220VAC (交流220V)

Technical Data / 技术参数

Items / 规格	DA 10	DA 20	DA 30	DAW 10	DAW 20	DAW 30
Max Pressure / 最高工作油压	31.5Mpa	31.5Mpa	31.5Mpa	31.5Mpa	31.5Mpa	31.5Mpa
Max Flow / 最大流量	60L/min	120L/min	240L/min	60L/min	120L/min	240L/min
Net Weight / 净重	3.4kg	4.4kg	5.6kg	4.9kg	5.8kg	7kg

To Order / 选型说明

DA **W** **10** **B** **D24**
 ① ② ③ ④ ⑤

- ① Pilot Operated Unloading Relief Valve (先导式卸荷溢流阀)
- ② None: Without Pilot Valve (不带导阀) | W: With Pilot Valve (带导阀)
- ③ Size: 10 / 20 / 30
- ④ A: Normally Closed (常闭) | B: Normally Open (常开)
- ⑤ D24: 24VDC (直流24V) | A220: 220VAC (交流220V)

PRESSURE CONTROL VALVES 压力控制阀
 DIRECT TYPE RELIEF VALVES
 直动式溢流阀

压力控制阀 PRESSURE CONTROL VALVES
 DIRECT TYPE RELIEF VALVES
 直动式溢流阀



DG-02



DT-02



DBDH6K



DBDS10P

Technical Data / 技术参数

Items / 规格	DT/DG-01	DT/DG-02
Max Pressure / 最高工作油压	25Mpa	25Mpa
Max Flow / 最大流量	2L/min	16L/min
Net Weight / 净重	1.5kg	1.5kg

To Order / 选型说明

D
G/T
02
H

1
2
3
4

① Direct Type Relief Valves (直动式溢流阀)

② G: Sub-plate Mounting (板式安装) | T: Threaded Connection (管式安装)

③ Size: 01/02

④ H: 7~25Mpa | C: 3.5~14Mpa | B: 0.1~7Mpa

Technical Data / 技术参数

Items / 规格	DBD6	DBD10	DBD20
Max Pressure / 最高工作油压	31.5Mpa	31.5Mpa	31.5Mpa
Max Flow / 最大流量	50L/min	120L/min	250L/min
Net Weight / 净重	1.5kg	1.5kg	

To Order / 选型说明

DBD
H
6
K

1
2
3
4

① Direct Type Relief Valves (直动式溢流阀)

② H: With Handle (调节手柄) | S: Adjusting Bolt With Protect Cover (带保护罩的六角螺栓)

③ Size: 6/8/10/20

④ K: Plug-in Type (插入式连接) | P: Sub-plate Mounting (板式安装) | G: Threaded Connection (管式安装)

PRESSURE CONTROL VALVES 压力控制阀
 MODULAR RELIEF VALVES
 叠加式溢流阀

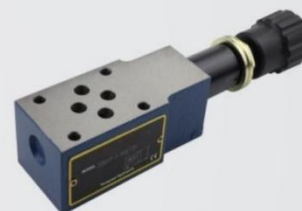
压力控制阀 PRESSURE CONTROL VALVES
 MODULAR RELIEF VALVES
 叠加式溢流阀



MRV-02



MRV-03



ZDB6



ZDB10

Technical Data / 技术参数

Items / 规格	MRV-02	MRV-03
Max Pressure / 最高工作油压	25Mpa	25Mpa
Max Flow / 最大流量	45L/min	100L/min
Net Weight / 净重	1.4kg	3.3kg

To Order / 选型说明

MRV 02 P ■
 ① ② ③ ④

- ① Modular Relief Valve (叠加式溢流阀)
- ② Size: 02 / 03
- ③ P: P Port (P孔) | A: A Port (A孔) | B: B Port (B孔) | W: A&B (A&B孔)
- ④ None: 25Mpa | 1: 7Mpa | 2: 14Mpa

Technical Data / 技术参数

Items / 规格	ZDB6	Z2DB6	ZDB10	Z2DB10
Max Pressure / 最高工作油压	31.5Mpa	31.5Mpa	31.5Mpa	31.5Mpa
Max Flow / 最大流量	60L/min	60L/min	100L/min	100L/min
Net Weight / 净重	1.2kg	1.5kg	2.6kg	3kg

To Order / 选型说明

ZDB 6 VP ■
 ① ② ③ ④

- ① ZDB: Modular Relief Valve (叠加式溢流阀)
Z2DB: Just Applicable VC and VD with 2 Plug In Relief Valve (仅适用VC和VD, 带2个插入式叠加溢流阀)
- ② 6: NG6 (6通径) | 10: NG10 (10通径)
- ③ VP: P-TA | VA: A-TA | VB: B-TB | VC: A-TA&B-TB | VD: A-B&B-A
- ④ None: 31.5Mpa | 100: 10Mpa | 200: 20Mpa

PRESSURE CONTROL VALVES 压力控制阀
 MODULAR REDUCING VALVES
 叠加式减压阀

压力控制阀 PRESSURE CONTROL VALVES
 MODULAR REDUCING VALVES
 叠加式减压阀



MBRV-02



MBRV-03



ZDR6



ZDR10

Technical Data / 技术参数

Items / 规格	MBRV-02	MBRV-03
Max Pressure / 最高工作油压	25Mpa	25Mpa
Max Flow / 最大流量	45L/min	100L/min
Net Weight / 净重	1.3kg	3.4kg

Technical Data / 技术参数

Items / 规格	ZDR6	ZDR10
Max Pressure / 最高工作油压	31.5Mpa	31.5Mpa
Max Flow / 最大流量	30L/min	50L/min
Net Weight / 净重	1.2kg	2.8kg

To Order / 选型说明

MBRV 02 P ■
 ① ② ③ ④

- ① Modular Reducing Valve (叠加式减压阀)
- ② Size: 02 / 03
- ③ P: P Port (P孔) | A: A Port (A孔) | B: B Port (B孔)
- ④ None: 25Mpa | 1: 7Mpa | 2: 14Mpa

To Order / 选型说明

ZDR 6 DP ■ YM
 ① ② ③ ④ ⑤

- ① Modular Reducing Valve (叠加式减压阀)
- ② 6: NG6 (6通径) | 10: NG10 (10通径)
- ③ DP: P Port (P孔) | DA: A Port (A孔)
- ④ None: 21Mpa | 75: 7.5Mpa | 150: 15Mpa
- ⑤ YM: Without Check Valve (不带单向阀) | Y: With Check Valve (带单向阀)

PRESSURE CONTROL VALVES 压力控制阀
 PRESSURE REDUCING AND CHECK VALVES
 减压单向阀

压力控制阀 PRESSURE CONTROL VALVES
 PILOT OPERATED REDUCING VALVES
 先导式减压阀



RCG-03



RCG-06



DR10



DR20

Technical Data / 技术参数

Items / 规格	R(C)G-03	R(C)G-06	R(C)G-10
Max Pressure / 最高工作油压	25Mpa	25Mpa	25Mpa
Max Flow / 最大流量	100L/min	200L/min	400L/min
Net Weight / 净重	5.4kg	8.1kg	13.8kg

To Order / 选型说明

R(C)
1
G
2
03
3
H
4

1 Pressure Reducing and Check Valves (C: With Check Valve) / 板式减压阀 (C带单向阀)

2 G: Sub-plate Mounting (板式安装) | T: Threaded Connection (管式安装)

3 Size: 03 / 06 / 10

4 H: 7~25Mpa | C: 3.5~14Mpa | B: 0.1~7Mpa

Technical Data / 技术参数

Items / 规格	DR10	DR20	DR30
Max Pressure / 最高工作油压	31.5Mpa	31.5Mpa	31.5Mpa
Max Flow / 最大流量	150L/min	300L/min	400L/min
Net Weight / 净重	3.6kg	5.3kg	8.2kg

To Order / 选型说明

DR
1
10
2
Y
3
M
4

1 Pilot Operated Reducing Valve (先导式减压阀)

2 Size: 10 / 20 / 30

3 Y: Pilot Oil Drain External (控制油供给)

4 M: Without Check Valve (不带单向阀) | None: With Check Valve (带单向阀)

PRESSURE CONTROL VALVES 压力控制阀
 H/HC TYPE PRESSURE CONTROL VALVES
 HC型压力控制阀

压力控制阀 PRESSURE CONTROL VALVES
 PILOT OPERATED SEQUENCE VALVES
 先导式顺序阀



HCG-03



HCG-06



DZ10



DZ20

Technical Data / 技术参数

Items / 规格	H(C)G-03	H(C)G-06	H(C)G-10
Max Pressure / 最高工作油压	25Mpa	25Mpa	25Mpa
Max Flow / 最大流量	100L/min	200L/min	300L/min
Net Weight / 净重	4.8kg	7.4kg	13.8kg

To Order / 选型说明

H(C) G 03 H
 ① ② ③ ④

- ① H/HC Type Pressure Control Valves (C: With Check Valves) / HC型压力控制阀 (C带单向阀)
- ② G: Sub-plate Mounting (板式安装) | T: Threaded Connection (管式安装)
- ③ Size: 03 / 06 / 10
- ④ H: 7~25Mpa | C: 3.5~14Mpa | B: 2.5~7Mpa | A: 0.1~3.5Mpa

Technical Data / 技术参数

Items / 规格	DZ10	DZ20	DZ30
Max Pressure / 最高工作油压	31.5Mpa	31.5Mpa	31.5Mpa
Max Flow / 最大流量	200L/min	400L/min	600L/min
Net Weight / 净重	3.6kg	5.5kg	8.2kg

To Order / 选型说明

DZ 10 Y M
 ① ② ③ ④

- ① Pilot Operated Reducing Valve (先导式减压阀)
- ② Size: 10 / 20 / 30
- ③ None: Pilot oil supply internal and drain internal (内控内泄) | X: Pilot oil supply external and drain internal (外控内泄) | Y: Pilot oil supply internal and drain external (内控外泄) | XY: Pilot oil supply external and drain external (外控外泄)
- ④ M: Without Check Valve (不带单向阀) | None: With Check Valve (带单向阀)

CHECK VALVES 单向阀
 MODULAR OPERATED CHECK VALVES
 叠加式液控单向阀

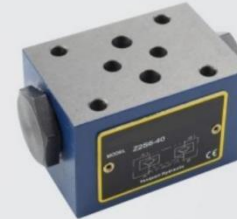
单向阀 CHECK VALVES
 MODULAR OPERATED CHECK VALVES
 叠加式液控单向阀



MPCV-02



MPCV-03



Z2S6



Z2S10

Technical Data / 技术参数

Items / 规格	MPCV-02	MPCV-03	MPCV-04	MPCV-06
Max Pressure / 最高工作油压	25Mpa	25Mpa	25Mpa	25Mpa
Max Flow / 最大流量	35L/min	70L/min	190L/min	400L/min
Net Weight / 净重	1.3kg	2.8kg	5.5kg	13kg

To Order / 选型说明

MPCV 02 W
 ① ② ③

- ① Modular Operated Check Valve (叠加式液控单向阀)
- ② Size: 02 / 03 / 04 / 06
- ③ W: A&B Port (A&B孔) | A: A Port (A孔) | B: B Port (B孔)

Technical Data / 技术参数

Items / 规格	Z2S6	Z2S10	Z2S16	Z2S22
Max Pressure / 最高工作油压	31.5Mpa	31.5Mpa	31.5Mpa	31.5Mpa
Max Flow / 最大流量	35L/min	100L/min	200L/min	300L/min
Net Weight / 净重	0.8kg	2.1kg	7kg	12kg

To Order / 选型说明

Z2S 6 ■
 ① ② ③

- ① Modular Operated Check Valve (叠加式液控单向阀)
- ② 6: NG6 (6通径) | 10: NG10 (10通径) | 16: NG16 (16通径) | 22: NG22 (22通径)
- ③ None: A&B Port (空白: A&B孔) | A: A Port (A孔) | B: B Port (B孔)

CHECK VALVES 单向阀
 RIGHT ANGLE CHECK VALVES
 直角单向阀

单向阀 CHECK VALVES
 RIGHT ANGLE CHECK VALVES
 直角单向阀



CRG-03



CRG-06



CRNG-03



CRNG-06

Technical Data / 技术参数

Items / 规格	CRG-03	CRG-06	CRG-10
Max Pressure / 最高工作油压	25Mpa	25Mpa	25Mpa
Max Flow / 最大流量	120L/min	300L/min	500L/min
Net Weight / 净重	1.9kg	4.7kg	8.3kg

To Order / 选型说明

CRG 03
 ① ————— ②

① Right Angle Check Valve (直角单向阀)

② Size: 03 / 06 / 10

Technical Data / 技术参数

Items / 规格	CRNG-03	CRNG-06	CRNG-10
Max Pressure / 最高工作油压	25Mpa	25Mpa	25Mpa
Max Flow / 最大流量	120L/min	300L/min	500L/min
Net Weight / 净重	1.9kg	3.5kg	5.8kg

To Order / 选型说明

CRNG 03
 ① ————— ②

① Right Angle Check Valve (直角单向阀)

② Size: 03 / 06 / 10

CHECK VALVES 单向阀
MODULAR CHECK VALVES
叠加式单向阀

单向阀 CHECK VALVES
IN-LINE CHECK VALVES
直通单向阀



MCV-02



MCV-03



CIT-02



CIT-06

Technical Data / 技术参数

Items / 规格	MCV-02	MCV-03
Max Pressure / 最高工作油压	25Mpa	25Mpa
Max Flow / 最大流量	45L/min	100L/min
Net Weight / 净重	1kg	1.8kg

To Order / 选型说明

MCV 02 P
① ——— ② ——— ③

① Modular Check Valve (叠加式单向阀)

② Size: 02 / 03

③ A:A port | B:B port | P:P port | T: T port | W:A&B port

Technical Data / 技术参数

Items / 规格	CIT-02	CIT-03	CIT-04	CIT-06
Max Pressure / 最高工作油压	25Mpa	25Mpa	25Mpa	25Mpa
Max Flow / 最大流量	15L/min	30L/min	40L/min	120L/min
Connection Size / 连接尺寸	1/4	3/8	1/2	3/4
Net Weight / 净重	0.1kg	0.3kg	0.6kg	0.8kg

To Order / 选型说明

CIT 02
① ——— ②

① In-line Check valve (单向阀)

② Size: 02 / 03 / 04 / 06 / 08

CHECK VALVES 单向阀
S TYPE CHECK VALVES
S型单向阀

单向阀 CHECK VALVES
OPERATED CHECK VALVES
液控单向阀



S10P



S20P



SL10P



SV20P

Technical Data / 技术参数

Items / 规格	S10P	S20P	S30P
Max Pressure / 最高工作油压	31.5Mpa	31.5Mpa	31.5Mpa
Max Flow / 最大流量	40L/min	200L/min	400L/min
Net Weight / 净重	2kg	4.3kg	7.7kg

To Order / 选型说明

S 10 P
① ② ③

- ① S Type Check Valve (S型单向阀)
- ② Size: 10/20/30
- ③ P: Plate Mounting (板式安装)

Technical Data / 技术参数

Items / 规格	SV10/SL10	SV20/SL20	SV30/SL30
Max Pressure / 最高工作油压	31.5Mpa	31.5Mpa	31.5Mpa
Max Flow / 最大流量	120L/min	350L/min	550L/min
Net Weight / 净重	2.1kg	4.7kg	7.8kg

To Order / 选型说明

S V/L 10 P A
① ② ③ ④ ⑤

- ① Operated Check Valve (S型液控单向阀)
- ② V: Without Leakage Port (不带泄油口) | L: With leakage port (带泄油口)
- ③ Size: 10/20/30
- ④ P: Sub-plate Mounting (板式安装) | G: Threaded Connection (螺纹安装)
- ⑤ A: With pre-opening(standard version) (带先导阀) | B: Without pre-opening (不带先导阀)

FLOW CONTROL VALVES 流量控制阀
 MODULAR THROTTLE AND CHECK VALVES
 叠加式单向节流阀

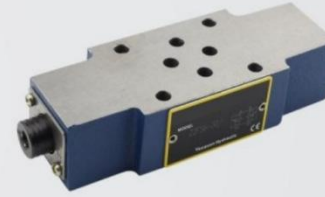
流量控制阀 FLOW CONTROL VALVES
 MODULAR THROTTLE AND CHECK VALVES
 叠加式单向节流阀



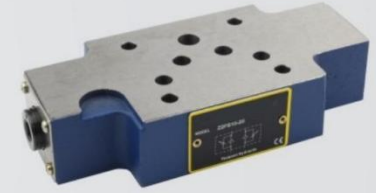
MTCV-02



MTCV-03



Z2FS6



Z2FS10

Technical Data / 技术参数

Items / 规格	MTCV-02	MTCV-03	MTCV-04	MTCV-06
Max Pressure / 最高工作油压	25Mpa	25Mpa	25Mpa	25Mpa
Max Flow / 最大流量	45L/min	90L/min	200L/min	400L/min
Net Weight / 净重	1.4kg	2.9kg	6kg	12.5kg

To Order / 选型说明



- ① Modular Throttle and Check Valves
- ② Size: 02 / 03 / 04 / 06
- ③ W: A&B Port (A&B孔) | A: A Port (A孔) | B: B Port (B孔)
- ④ None: Output Regulating (空白: 出口节流) | Y: Input Regulating (入口节流)

Technical Data / 技术参数

Items / 规格	Z2FS6	Z2FS10	Z2FS16	Z2FS22
Max Pressure / 最高工作油压	31.5Mpa	31.5Mpa	31.5Mpa	31.5Mpa
Max Flow / 最大流量	80L/min	160L/min	250L/min	350L/min
Net Weight / 净重	0.9kg	1.9kg	5.8kg	8.3kg

To Order / 选型说明



- ① Modular Throttle and Check Valves
- ② 6: NG6 (6通径) | 10: NG10 (10通径) | 16: NG16 (16通径) | 22: NG22 (22通径)
- ③ None: A&B Port (空白: A&B孔) | A: A Port (A孔) | B: B Port (B孔)

FLOW CONTROL VALVES 流量控制阀
IN-LINE FLOW VALVES
单向节流阀

流量控制阀 FLOW CONTROL VALVES
RESTRICTIVE CHECK VALVES
单向节流阀



KC-02



KC-03



MK6G



MK10G

Technical Data / 技术参数

Items / 规格	KC-02	KC-03	KC-04	KC-06
Max Pressure / 最高工作油压	31.5Mpa	31.5Mpa	31.5Mpa	31.5Mpa
Max Flow / 最大流量	15L/min	30L/min	40L/min	120L/min
Connection Size / 连接尺寸	1/4	3/8	1/2	3/4
Net Weight / 净重	0.1kg	0.3kg	0.6kg	0.9kg

To Order / 选型说明

KC 02
① ————— ②

① In-line Flow Valve (单向节流阀)

② Size: 02/03/04/06

Technical Data / 技术参数

Items / 规格	MK6G	MK8G	MK10G	MK15G	MK20G
Max Pressure / 最高工作油压	31.5Mpa	31.5Mpa	31.5Mpa	31.5Mpa	31.5Mpa
Max Flow / 最大流量	15L/min	30L/min	50L/min	140L/min	200L/min
Net Weight / 净重	0.3kg	0.4kg	0.7kg	1.3kg	2.2kg

To Order / 选型说明

MK 6 G
① ————— ② ————— ③

① MK: Restrictive Check Valve (单向节流阀) | MG: Restrictive Valve (节流阀)

② Size: 6/8/10/15/20

③ G: Threaded Connection (管式安装)

CARTRIDGE VALVES 插装阀
 CARTRIDGE SOLENOID VALVES
 插装式电磁换向阀

插装阀 CARTRIDGE VALVES
 CARTRIDGE CHECK VALVES
 插装式单向阀



DHF-08



DHF-10



DF-08



DF-10

Technical Data / 技术参数

Items / 规格	DHF-08	DHF-10	DHF-12	DHF-16
Max Pressure / 最高工作油压	25Mpa	25Mpa	25Mpa	25Mpa
Max Flow / 最大流量	30L/min	50L/min	95L/min	150L/min
Net Weight / 净重	0.27kg	0.42kg	0.6kg	0.7kg

To Order / 选型说明

DHF 08 20 D24
 ① ② ③ ④

① Cartridge Solenoid Valve (插装式电磁换向阀)

② Size: 08 / 10 / 12 / 16

③ 20: Normally Closed | 21: Normally Open

④ D24: 24VDC | A220: 220VAC

Technical Data / 技术参数

Items / 规格	DF-08	DF-10	DF-12	DF-16
Max Pressure / 最高工作油压	31.5Mpa	31.5Mpa	31.5Mpa	31.5Mpa
Max Flow / 最大流量	30L/min	60L/min	110L/min	220L/min
Net Weight / 净重	0.05kg	0.08kg	0.17kg	0.28kg

To Order / 选型说明

DF 08 ■
 ① ② ③

① Cartridge Check Valve (插装式单向阀)

② Size: 08 / 10 / 12 / 16

③ None: Poppet Type (锥阀型) | 21: Ball Type (钢球型)

CARTRIDGE VALVES 插装阀
 CARTRIDGE DIRECTLY OPERATED RELIEF VALVES
 插装式直动溢流阀

插装阀 CARTRIDGE VALVES
 CARTRIDGE ADJUSTABLE FLOW VALVES
 插装式可调节流阀



YF-08



YF-10



LF-08



LF-10

Technical Data / 技术参数

Items / 规格	YF-08	YF-10
Max Pressure / 最高工作油压	22Mpa	22Mpa
Max Flow / 最大流量	20L/min	90L/min
Net Weight / 净重	0.16kg	0.23kg

To Order / 选型说明



1 Cartridge Directly Operated Relief Valve (插装式直动溢流阀)

2 Size: 08 / 10

3 None: 22Mpa (空白 22Mpa) | 13: 13Mpa | 5: 5Mpa

Technical Data / 技术参数

Items / 规格	LF-08	LF-10
Max Pressure / 最高工作油压	31.5Mpa	31.5Mpa
Max Flow / 最大流量	/	/
Net Weight / 净重	0.11kg	0.18kg

To Order / 选型说明



1 Cartridge Adjustable Flow Valve (插装式可调节流阀)

2 Size: 08 / 10 / 12

CARTRIDGE VALVES 插装阀
 CARTRIDGE LIFTING VALVES GROUP
 插装式升降阀组

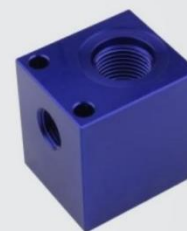
插装阀 CARTRIDGE VALVES
 CARTRIDGE BLOCKS
 插装式阀块



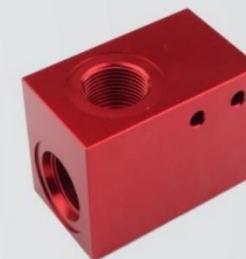
ET-02



ET-04



V2068



V6068

Technical Data / 技术参数

Items / 规格	ET-02	ET-04
Max Pressure / 最高工作油压	25Mpa	25Mpa
Max Flow / 最大流量	20L/min	50L/min
Net Weight / 净重	1.33kg	2.36kg

To Order / 选型说明

ET 02 D24
 ① ② ③

- ① Lifting Valve Group (升降阀组)
- ② Size: 02 / 04
- ③ D24: 24VDC | A220: 220VAC

Technical Data / 技术参数

Items / 规格	V2068/V2067	V3068/V3067	V6068/V6067	V8068/V8067
Connection Size / 连接尺寸	G1/4	G3/8	G3/4	G1
Net Weight / 净重	0.4kg	0.7kg	0.9kg	1.5kg

To Order / 选型说明

V 20 68
 ① ② ③

- ① Cartridge blocks (插装式阀块)
- ② 20: DHF08 | 30: DHF10 | 60: DHF12 | 80: DHF16
- ③ 67: Sub-plate Mounting (板式安装) | 68: Threaded Connection (螺纹安装)

CARTRIDGE VALVES 插装阀
LOGIC VALVES
逻辑阀

插装阀 CARTRIDGE VALVES
CARTRIDGE MODULAR VALVES
插装式电磁节流阀



LCD-40



LCD-50



MFS-02



MFS-03

Technical Data / 技术参数

Items / 规格	LCD16	LCD20	LCD25	LCD32	LCD40	LCD50	LCD63	LCD80	LCD100
Max Flow / 最大流量	175L/min	250L/min	300L/min	450L/min	700L/min	1400L/min	1750L/min	3200L/min	4900L/min

Items / 规格	LCP16	LCP20	LCP25	LCP32	LCP40	LCP50	LCP63	LCP80	LCP100
Max Flow / 最大流量	300L/min	380L/min	450L/min	600L/min	1000L/min	1600L/min	1750L/min	2500L/min	4500L/min

To Order / 选型说明

L CD/CP 16
 ① ② ③

① Logic Valves (逻辑阀)

② CD: Directional Type (方向型) | CP: Pressure Type (压力型)

③ Size: 16 / 20 / 25 / 32 / 40 / 50 / 63 / 80 / 100

Technical Data / 技术参数

Items / 规格	MFS-02	MFS-03
Max Pressure / 最高工作油压	25Mpa	25Mpa
Max Flow / 最大流量	30L/min	60L/min
Net Weight / 净重	2.1kg	2.8kg

To Order / 选型说明

MFS A 02 D24
 ① ② ③ ④

① Solenoid Flow Valves (电磁节流阀)

② A: A port | B: B port | T: T port

③ Size: 02 / 03

④ D24: 24VDC | A220: 220VAC

PROPORTIONAL CONTROL VALVES 比例控制阀
 PROPORTIONAL (PILOT) RELIEF VALVES
 比例(先导)溢流阀

比例控制阀 PROPORTIONAL CONTROL VALVES
 PROPORTIONAL RELIEF AND FLOW VALVES
 比例溢流调速阀



EDG-01



EBG-03



EFBG-03

Technical Data / 技术参数

Items / 规格	EDG-01	EBG-03	EBG-06
Max Pressure / 最高工作油压	25Mpa	25Mpa	25Mpa
Max Flow / 最大流量	2L/min	100L/min	200L/min
Net Weight / 净重	2.2kg	6.9kg	7.8kg

To Order / 选型说明

EDG 01 H
 ① ——— ② ——— ③

① Proportional (pilot) Relief Valve (比例先导阀)

② Size:01

③ H:25Mpa | C:14Mpa | B:7Mpa

EBG 03 H
 ① ——— ② ——— ③

① Proportional pilot Relief Valve (比例先导溢流阀)

② Size:03 06

③ H:25Mpa | C:14Mpa

Technical Data / 技术参数

Items / 规格	EFBG-03	EFBG-06
Max Pressure / 最高工作油压	25Mpa	25Mpa
Max Flow / 最大流量	160L/min	250L/min
Net Weight / 净重	17kg	35kg

To Order / 选型说明

EFBG 03 160 H
 ① ——— ② ——— ③ ——— ④

① Proportional Relief and Flow Valve (比例溢流调速阀)

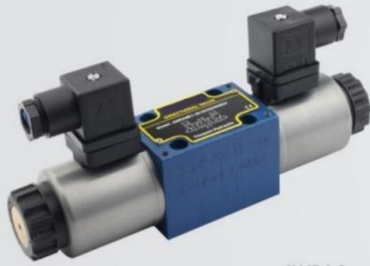
② Size:03/06

③ 125:125L/min | 160:160L/min

④ H:25Mpa | C:14Mpa

PROPORTIONAL CONTROL VALVES 比例控制阀
 PROPORTIONAL SOLENOID DIRECTIONAL VALVES
 比例电磁换向阀

比例控制阀 PROPORTIONAL CONTROL VALVES
 PROPORTIONAL OPERATED RELIEF VALVES
 比例先导式溢流阀



4WRA6



DBE10



DBE20

Technical Data / 技术参数

Items / 规格	4WRA6	4WRA10
Max Pressure / 最高工作油压	31.5Mpa	31.5Mpa
Max Flow / 最大流量	42L/min	75L/min
Working Voltage / 工作电压	24VDC	24VDC

To Order / 选型说明

4WRA ■ 6 E 07 2X G24
 1 2 3 4 5 6 7

- 1 Proportional Directional Valve (比例方向阀)
- 2 None: Without Integrate (不含放大器) | E: With Integrate (含放大器)
- 3 Size: 6:NG6 (6通径) | 10: NG10 (10通径)
- 4 Spool Symbol (阀芯机能)
- 5 Nominal flow at a valve pressure differential $\Delta P=10\text{bar}$: NG6: 07=7L/min 15=15L/min 30=26L/min | NG10: 30=30L/min 60=60L/min
- 6 2X Series
- 7 G24: Power Supply Voltage 24VDC (工作电压24VDC)

Technical Data / 技术参数

Items / 规格	DBE10/DBEM10	DBE20/DBEM20	DBE30/DBEM30
Max Pressure / 最高工作油压	31.5Mpa	31.5Mpa	31.5Mpa
Max Flow / 最大流量	275L/min	550L/min	700L/min
Working Voltage / 工作电压	24VDC	24VDC	24VDC
Net Weight / 净重	5.4kg	6.3kg	7.5kg

To Order / 选型说明

DBE ■ 10 3X 315 G24
 1 2 3 4 5 6

- 1 Proportional Relief Valve (比例溢流阀)
- 2 None: Without Maximum Pressure Safety (不含高压保护) | M: With Maximum Pressure Safety (含高压保护)
- 3 Size: 10 / 20 / 30
- 4 3X Series
- 5 Max Pressure: 50: 5Mpa | 100: 10Mpa | 200: 20Mpa | 315: 31.5Mpa
- 6 G24: Power Voltage 24VDC (工作电压24VDC)

PRESSURE SWITCH 压力继电器
 JCS/JCD PRESSURE SWITCH
 压力继电器

压力继电器 PRESSURE SWITCH
 HED PRESSURE SWITCH
 压力继电器



JCS-02



JCD-02



HED40A



HED40H



HED40P

Technical Data / 技术参数

Items / 规格	JCS-02-H	JCS-02-N	JCD-02-H	JCD-02-S
Max Pressure / 最高工作油压	40Mpa	25Mpa	25Mpa	4Mpa
Used Pressure / 使用压力	6~35Mpa	3~21Mpa	3~21Mpa	0.4~2.6Mpa
Net Weight / 净重	0.78kg	0.78kg	0.5kg	0.5kg

To Order / 选型说明

JCS 02 H
 ① ——— ② ——— ③

- ① Pressure Switch (压力继电器)
- ② Size: 02
- ③ Used Pressure: H: 6~35Mpa | N: 3~21Mpa

JCD 02 H
 ① ——— ② ——— ③

- ① Pressure Switch (压力继电器)
- ② Size: 02
- ③ Used Pressure: H: 3~21Mpa | S: 0.4~2.6Mpa

Technical Data / 技术参数

Items / 规格	HED40
Max Pressure / 最高工作油压	40Mpa
Used Pressure / 使用压力	1~35Mpa
Net Weight / 净重	0.7kg

To Order / 选型说明

HED40 P 350
 ① ——— ② ——— ③

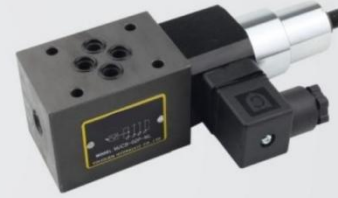
- ① Pressure Switch (压力继电器)
- ② P: Sub-plate Mounting (底板安装) | A: Pipe Installation (管式安装) | H: Vertical Stacking Systems (作垂直叠加件)
- ③ Used Pressure: 350: 6~35Mpa | 100: 5~10Mpa | 50: 1~5Mpa

PRESSURE SWITCH 压力继电器
DNB PRESSURE SWITCH
 压力继电器

压力继电器 PRESSURE SWITCH
MJCS PRESSURE SWITCH
 压力继电器



DNB



MJCS-02P



MJCS-02W

Technical Data / 技术参数

Items / 规格	DNB
Max Pressure / 最高工作油压	7~30Mpa
Used Pressure / 使用压力	0.5~25Mpa
Net Weight / 净重	0.6kg

Technical Data / 技术参数

Items / 规格	MJCS-02	MJCS-03
Max Pressure / 最高工作油压	21~40Mpa	21~40Mpa
Used Pressure / 使用压力	0.5-35Mpa	0.5-35Mpa
Net Weight / 净重	A/B/P:1.8kg W:2.3kg	A/B/P:2.8kg W:3.2kg

To Order / 选型说明

DNB **250K** **22B**
 ① ② ③

- ① Pressure Switch (压力继电器)
- ② Used Pressure: 250K: 4-25Mpa | 150K: 3-15Mpa | 70K: 0.6-7Mpa | 40K: 0.5-4Mpa
- ③ 22B Series (22B系列)

To Order / 选型说明

MJCS **02** **A** **H**
 ① ② ③ ④

- ① Pressure Switch (压力继电器)
- ② Size: 02 / 03
- ③ A: A Port | B: B Port | P: P Port | W: A&B Port
- ④ Used Pressure: H: 6~35Mpa | N: 3-21Mpa | NL: 1.5-7Mpa | NLL: 0.5-6Mpa

HYDRAULIC ACCESSORIES 液压附件

COILS

线圈

液压附件 HYDRAULIC ACCESSORIES

HYDRAULIC GAUGES

压力表



YN60-LA



YN60-LB

Technical Data / 技术参数

Items / 规格	C-02	C-03	C-NG6	C-NG10	C-13	C-16
Inner Size / 内径尺寸	φ23mm	φ31.5mm	φ23mm	φ31.5mm	φ13mm	φ16mm
Shell / 外壳	Nylon	Nylon	Steel	Steel	Nylon	Nylon
Net Weight / 净重	0.3kg	0.8kg	0.3kg	0.9kg	0.15kg	0.25kg

To Order / 选型说明

C
13
D24

①
②
③

① Coils

② Size: 02:23mm | 03:31.5mm | 13:13mm | 16:16mm

③ D24: 24VDC | A220: 220VAC

Technical Data / 技术参数

Items / 规格	YN60
Max Pressure / 最高工作油压	60Mpa
Connection Size / 连接尺寸	PT 1/4 14*1.5mm
Net Weight / 净重	0.2kg

To Order / 选型说明

YN
60
25
LA

①
②
③
④

① Pressure Gauges (压力表)

② Size: 60mm / 100mm

③ 6: 6Mpa | 10: 10Mpa | 16: 16Mpa | 25: 25Mpa | 31.5: 31.5Mpa | 40: 40Mpa | 60: 60Mpa

④ LA: Radia (I 径向) | LB: Axia (I 轴向)